

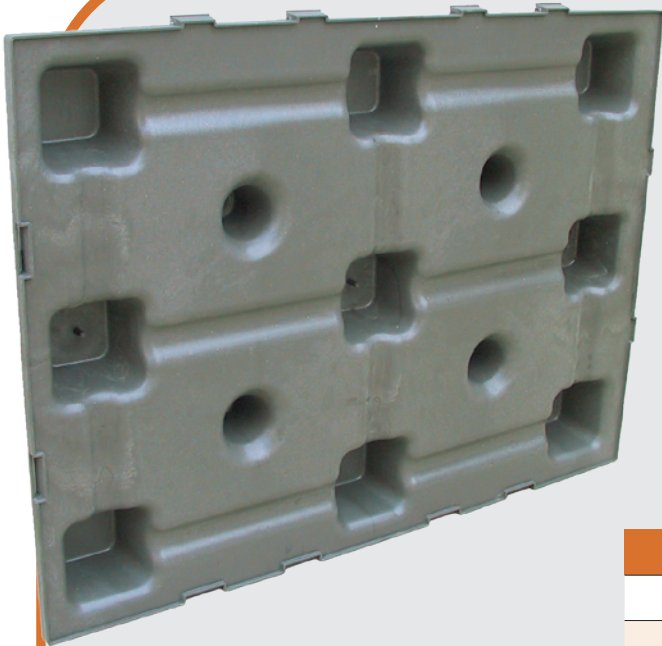


# SKUDO

An innovative system for protecting  
waterproofing in earth retaining walls



# SKUDO



## An innovative system for protecting waterproofing in earth retaining walls

SKUDO is an element made from recycled polypropylene designed to protect the waterproof layer in retaining walls. Due to its sturdiness, it ensures resistance to compression and to dragging down due to settling of the soil, thereby preserving the waterproof layer over time. Besides its height, it creates an excellent air chamber for ventilation and excellent separation from soil moisture.

### TECHNICAL FEATURES

Composition	Recycled PP
Size	cm 59x79x7,5 h
Weight	kg 1,81
Resistance to compression	5000 kg/m <sup>2</sup>
Resistance to temperature	-21°C/+53°C
Support bases	755 cm <sup>2</sup> /m <sup>2</sup>
Air space	65 l/m <sup>2</sup>

Item	Description	Dimensions in cm.
<b>PRO SKU</b>	Corner profile "L"	20x20x200
<b>PRO SKU2</b>	Double profile top cover	5x9,5x15x200





The support bases, amounting to a surface of 755 cm<sup>2</sup> / sqm., are shaped so as to cause no damage to the waterproof layer.

The height of «SKUDO» (7.5 cm) along with the special shape formed by truncated cones and truncated pyramids, creates an air chamber of 65l / sqm.

This volume of air ensures excellent ventilation, and at the same time humidity is separated from the ground, thus eliminating scree.

It is very important to create a channel at the foot of the wall, to collect the drained water; the «skudo» will be at the top of this.

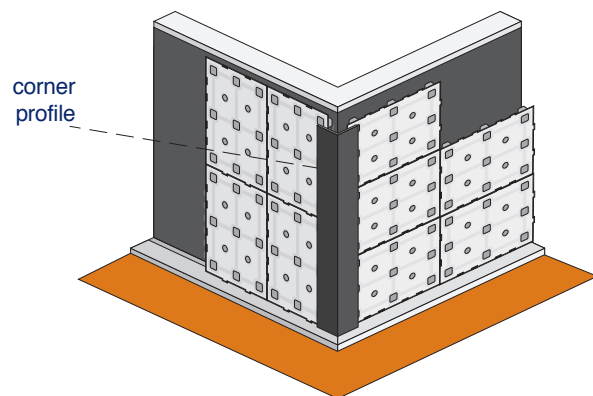
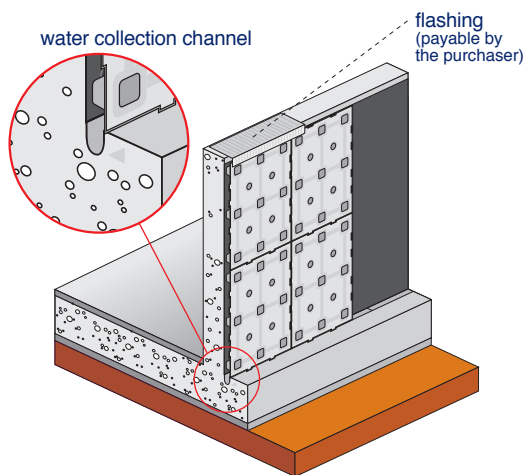
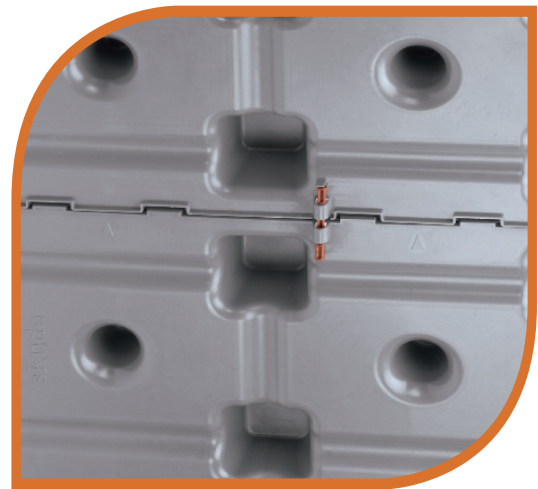
The shape and type of material from which the «skudo» is made ensures resistance to any type of land to be used for re-filling.

The special interlocking system allows easy and fast laying (see laying diagram). To ensure vertical and horizontal adherence of the elements that have been installed, it is advisable to insert dowels into the slots during the laying stage.

In order to close the corners, an "L" profile should be applied directly to the "skudo».

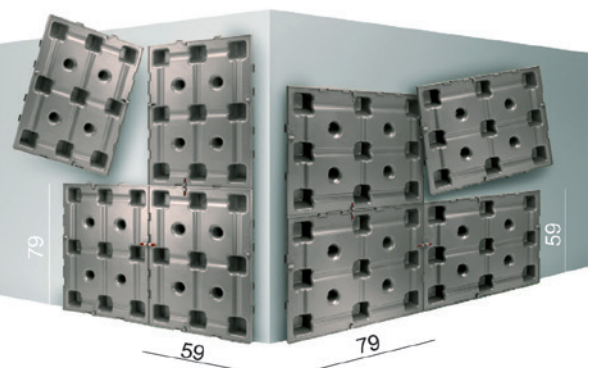
A flashing or sealing grid (payable by the purchaser) should be placed over the last element.

If necessary you can cut «SKUDO» with a regular hacksaw or grinding wheel. «SKUDO» can be used in earth retaining walls, even without the waterproof layer.



detail of gusset sealing

coupling system







24050 Mornico Al Serio (BG) - I - Via Fornace  
Tel. +39 035 4490440 - Fax +39 035 4490752

[www.projectforbuilding.com](http://www.projectforbuilding.com) - [info@projectforbuilding.com](mailto:info@projectforbuilding.com)

