

# ECOTEGOLA

Innovative technology applied to domestic  
and industrial light roofing

# ECOTEGOLA

## ECOTEGOLA

### Innovative technology applied to domestic and industrial light roofing

#### 1. ECOLOGICAL AND RECYCLABLE

Made with quality materials, Ecotegola® It is 100% recyclable and does not contain any toxic substances.

#### 2. AESTHETICS

Ecotegola® is produced in various models and is almost identical to terracotta tiles. You cannot see the difference once laid.

#### 3. INDESTRUCTIBLE

Ecotegola® is highly durable, both in terms of colour and impact resistance. Ecotegola® is not affected by temperature changes, and can endure a temperature range from -40°C to 60°C. The high percentage of anti-U.V. additives gives the product an excellent resistance to ageing.

#### 4. LIGHTWEIGHT - EASY TO LAY

Thanks to the extraordinary lightness of Ecotegola® (2.5 kg per sqm) and to the patented interlocking system, laying times are reduced by 50% compared to classic terracotta tiles (25 kg per square metre), or cement tiles (40 kg for sqm), which require cement for fixing. The easy handling of Ecotegola® offers inestimable advantages in terms of logistics and handling on site. Passing tiles from one person to another is faster, less tiring and less dangerous. Ecotegola® can be used on roofs with a minimum incline of 10%.

#### 5. HAIL - WIND

Roofs made with Ecotegola® are resistant to hail. The patented mounting system prevents wind and snow from causing damage. When laying, the tiles are attached one by one with screws to a phenolic wood panel, and there is also an interlocking system that joins one tile to the other, making the entire roof a single unit.

#### 6. RESISTANT TO ATMOSPHERIC AND CHEMICAL AGENTS

Thanks to its special composition, Ecotegola® cannot be attacked by various atmospheric and chemical agents, is not subject to the corrosive effect of salt in areas near to the sea, and resists attack by fungi, moulds, algae, bacteria and various microorganisms.

#### 7. THERMAL INSULATION

Ecotegola® is impervious to temperature changes. In winter it does not absorb cold or damp, thus not transmitting these inside the house. In summer, when traditional terracotta tiles heat up as a result of solar radiation, Ecotegola® maintains a lower temperature, acting as an insulator.

#### 8. WALKABLE SURFACE

It is safe to walk on; tiles will not break when walked on.

#### 9. SOUNDPROOFING

A normal roof generates noise when subjected to hail or rain. Ecotegola® does not reverberate, avoiding the "resounding" effect.

#### 10. ECONOMICS

Economic advantages Ecotegola®:

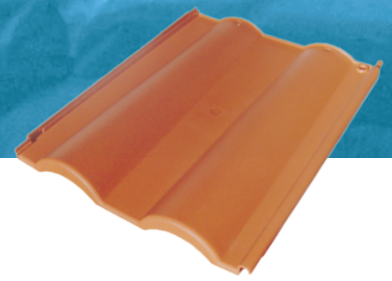
- due to its ease and speed of installation it allows you to drastically cut labour costs
- No maintenance expenditure is necessary
- thanks to its insulating properties, it saves in the consumption of energy
- given its lightweight quality, it is a good replacement for an old Eternit roof, in which case it is not necessary to strengthen the load-bearing structure, which translates to significant cost savings!





### Liberty ST

EcoTegola® Liberty ST  
Dimensions: 27.6 x 35.8 cm  
1 m<sup>2</sup> /2490g  
N° 12 Pieces = 1.10 m<sup>2</sup>



Start Up Liberty ST  
Dimensions: 27.6 x 9 cm  
N° 4 Pieces = 1.08 linear metres



Special interlocking system



### Portoghese ST

EcoTegola® Portoghese ST  
Dimensions: 25.4 x 32.8 cm  
1 m<sup>2</sup> /2410g  
N° 13 Pieces = 1.075 m<sup>2</sup>

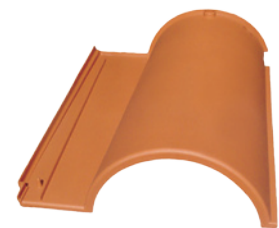


Start Up Portoghese ST  
Dimensions: 25.8 x 8cm  
N° 4 Pieces = 0.98 linear metres



### Portoghese LX

EcoTegola® Portoghese LX  
Dimensions: 24.5 x 33.1 cm  
1 m<sup>2</sup> /3130g  
N° 15 Pieces = 1.02 m<sup>2</sup>



### Colmo Universal

Colmo Universal  
Dimensions: 17 x 35.4 cm  
N° 3 Pieces = 1.009 linear metres



Start Up Colmo Universal  
Dimensions: 17 x 7cm



www.projectforbuilding.com

lapassa.it



24050 Mornico Al Serio (BG) - I - Via Fornace  
Tel. +39 035 4490440 - Fax +39 035 4490752

[www.projectforbuilding.com](http://www.projectforbuilding.com) - [info@projectforbuilding.com](mailto:info@projectforbuilding.com)

